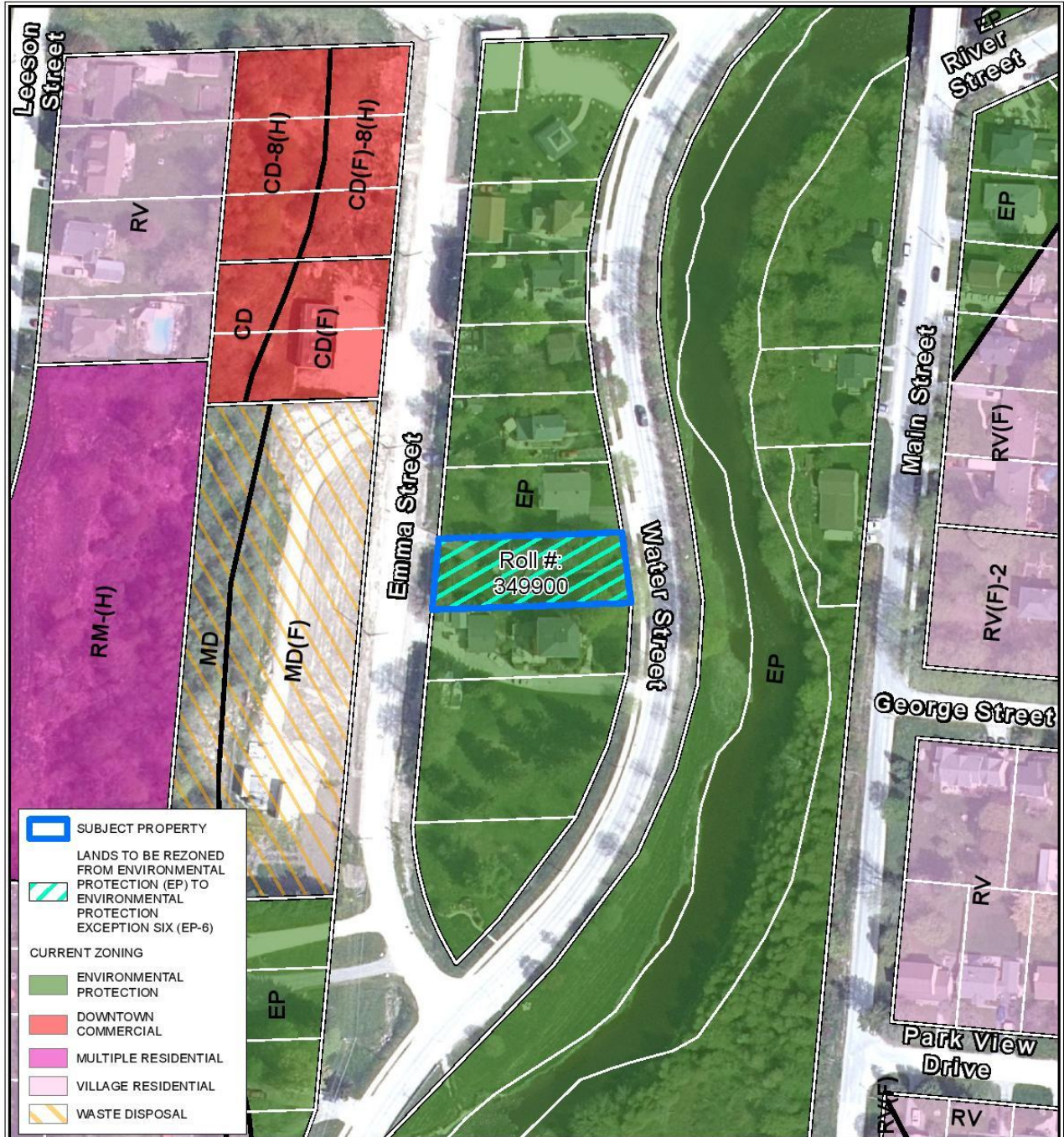


KEY MAP – Lands subject to Zoning By-law 2024-51



Legend

- SUBJECT PROPERTY
- LANDS TO BE REZONED FROM ENVIRONMENTAL PROTECTION (EP) TO ENVIRONMENTAL PROTECTION EXCEPTION SIX (EP-6)
- CURRENT ZONING**
- ENVIRONMENTAL PROTECTION
- DOWNTOWN COMMERCIAL
- MULTIPLE RESIDENTIAL
- VILLAGE RESIDENTIAL
- WASTE DISPOSAL



TOWN OF GRAND VALLEY

0 20 40 60 80
Metres

LOCATION PLAN
68 WATER STREET
ROLL # 349900

File
Z06-2024

Date
2024/10/23
Scale
1:1,500

Figure No.
1