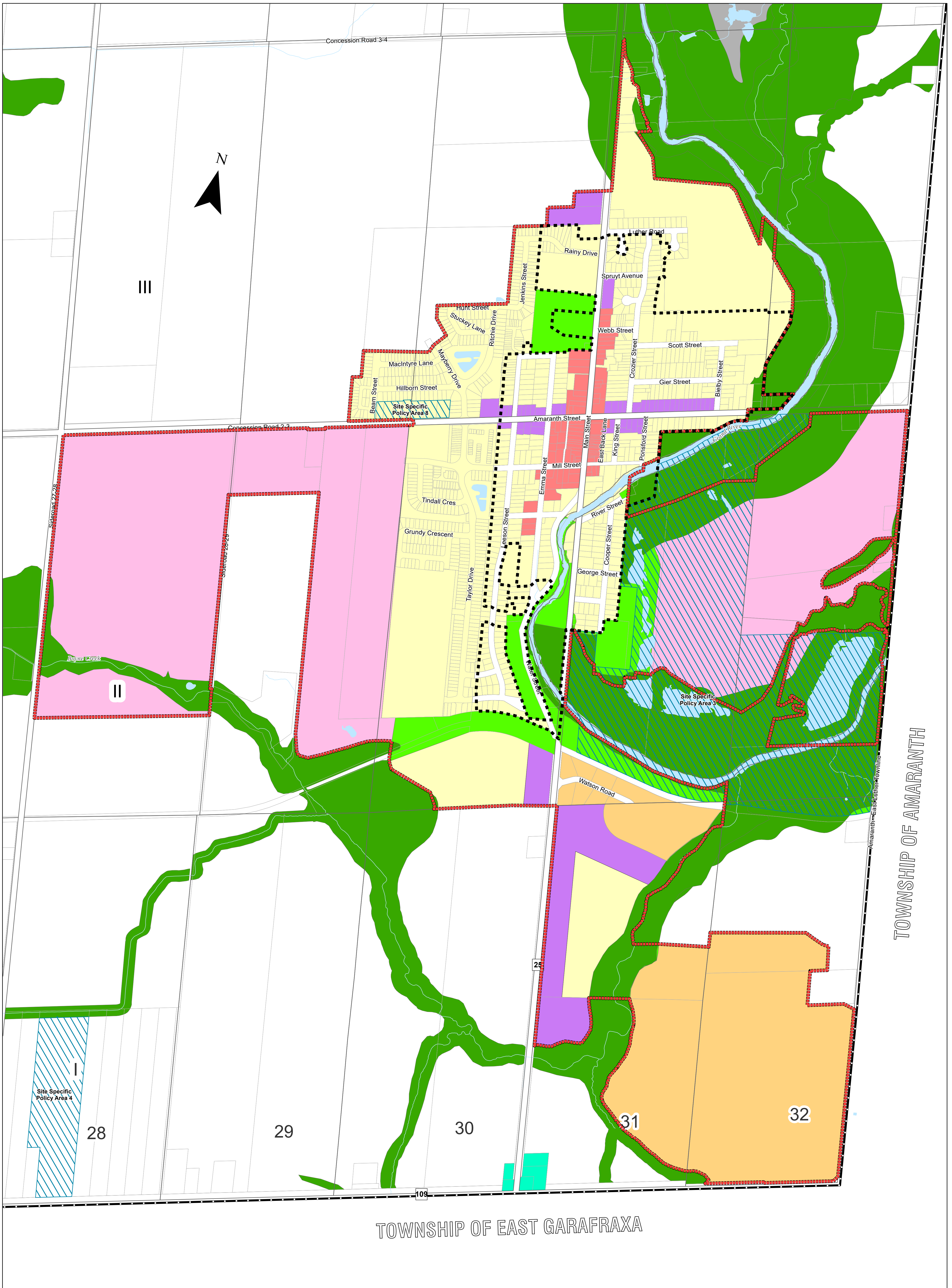


Document Path: P:\32000\32657-000 - Grand Valley Official Plan Update\06-Production\02-Plan\32657 OP Schedule A2 Land Use.mxd



Official Plan

Town of Grand Valley

Schedule A2 Land Use

Legend

- Provincial Highway
- County Road
- Municipal Boundary
- Urban Area
- Geographic Lot Fabric
- Watercourse
- Waterbody

Land Use Designation

- Delineated Built Boundary
- Site Specific Policy Areas

Official Plan Designation

- Prime Agricultural
- Downtown Commercial
- Employment
- Environmental Protection
- Extractive Industrial
- Gateway
- Mixed Use
- Open Space
- Rural Settlement
- Urban Residential
- Grand Valley East and West Study Area

Data Source: Source Data has been provided by the Ministry of Natural Resources, Grand River Conservation Authority, Dufferin County and Town of Grand Valley

Adopted: Print Date: 29-Oct-2024 JLR No.: 32657-000

