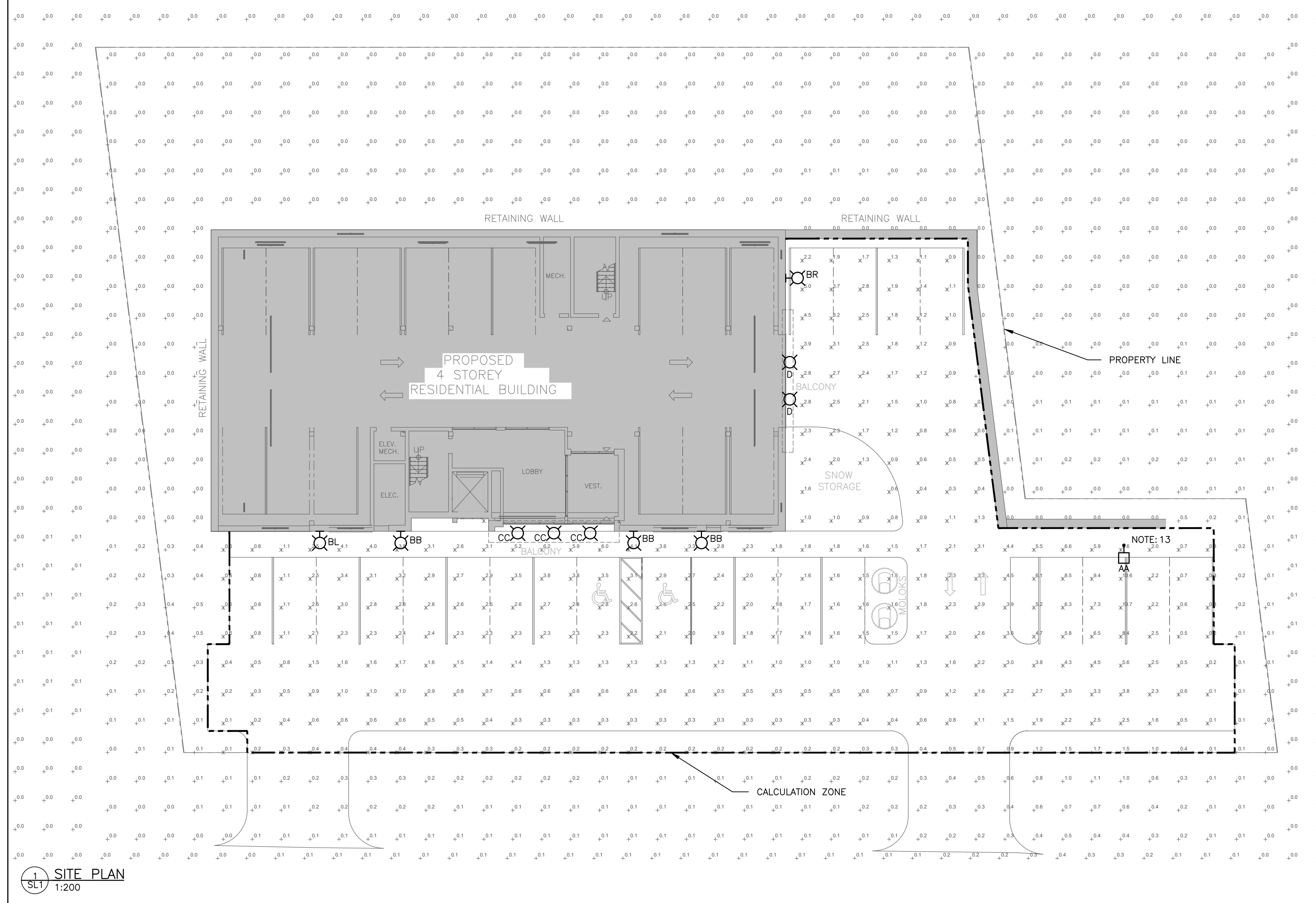
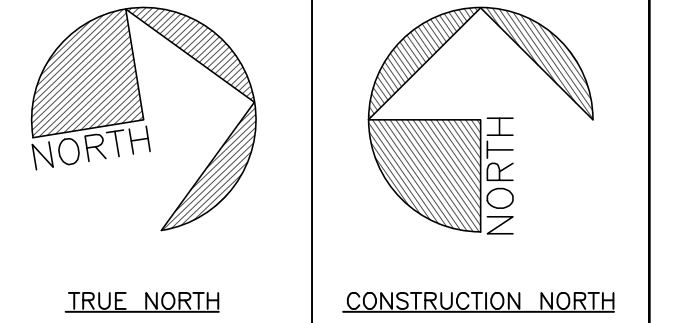
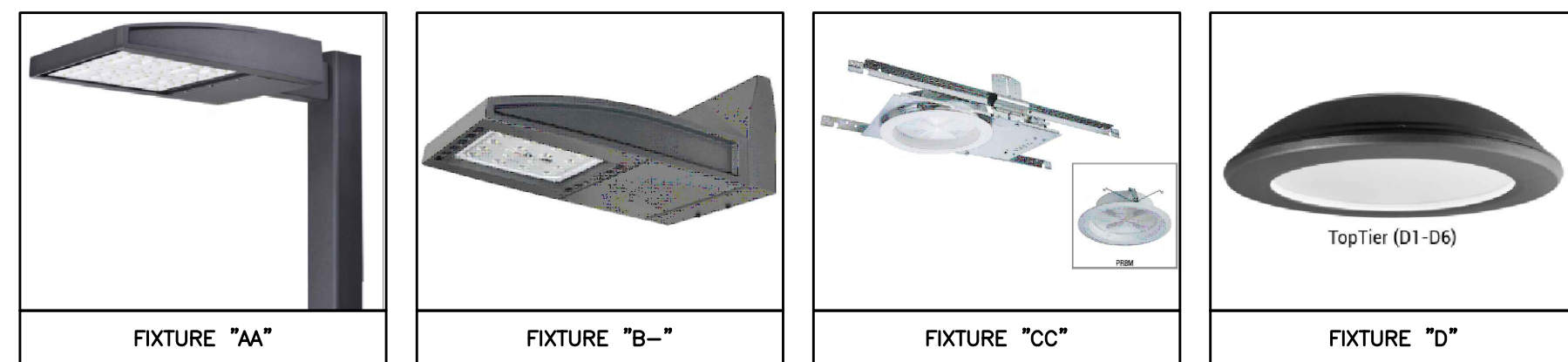


ELECTRICAL LEGEND	
	LIGHT FIXTURE (z = TYPE AS PER SCHEDULE)
	WALL MOUNTED LIGHT FIXTURE (z = TYPE AS PER SCHEDULE)
	POLE LIGHT FIXTURE (z = TYPE AS PER SCHEDULE)



- SITE LIGHTING NOTES:**
- THIS DRAWING IS FOR FIXTURE LOCATIONS AND PHOTOMETRIC LAYOUT OF SITE LIGHTING ONLY. CONTACT ELECTRICAL CONSULTANT FOR BUILDING ELECTRICAL SITE PLAN TO CONFIRM LAYOUT OF CONDUIT ROUTING, CIRCUIT ARRANGEMENT, AND WIRE SIZING.
 - VOLTAGES OF FIXTURES ARE TO BE VERIFIED WITH THE ELECTRICAL SITE PLANS PRIOR TO ORDERING FIXTURES.
 - ELEVATIONS OF BASES ARE TO BE COORDINATED WITH SITE GRADING PLAN.
 - LIGHT STANDARDS ARE TO BE COORDINATED WITH WINDOW LOCATIONS. ANY FIXTURES WITHIN 10' (3m) OF THE BUILDING OR ANY CHANGES MADE TO THE BUILDING ENVELOPE ARE TO BE BROUGHT TO THE ATTENTION OF THE SITE LIGHTING CONSULTANT OR PROJECT MANAGER.
 - SUBSTITUTIONS OF LIGHT FIXTURES ARE NOT PERMITTED. IF THE CONTRACTOR SUBSTITUTES LIGHTING FIXTURES, THE CONTRACTOR SHALL CARRY ALL COSTS TO HAVE PHOTOMETRIC CALCULATIONS DONE BY THE OFFICE OF THE SITE LIGHTING CONSULTANT AND ALL COSTS ASSOCIATED WITH SITE PLAN RE-SUBMISSION TO THE CITY.
 - PHOTOMETRICS SHOWN CONSIDER ALL FACTORS AFFECTING LIGHT OUTPUT LEVELS SUCH AS LAMP AND BALLAST DEPRECIATION AND DIRT ACCUMULATION OVER AN ESTIMATED ONE-YEAR PERIOD.
 - PHOTOMETRIC VALUES ARE SHOWN IN FOOTCANDLES(f.c). A LIGHT LOSS FACTOR OF 0.9 WAS USED IN THE CALCULATION.
 - HOUSE SIDE SHIELDS ARE USED WHERE INDICATED IN LUMINAIRE SCHEDULE. NO ADDITIONAL SHIELDING IS PROVIDED.
 - ALL EXTERIOR LIGHTING POLES ARE TO BE GALVANIZED TO PREVENT CORROSION.
 - ALL EXTERIOR LIGHTING MUST BE CONTROLLED BY AN ASTRONOMICAL TIME CLOCK (INTERMATIC CAT#T2825CR OR EQUAL) TO ENSURE THAT IT IS NOT "ON" DURING TIMES WHEN SUFFICIENT DAYLIGHT IS AVAILABLE.
 - PROVIDE ADDITIONAL BACKING FOR ALL WALL MOUNTED FIXTURES UNSUPPORTED BY STRUCTURAL ELEMENTS INSIDE BUILDING.
 - ALL EXTERIOR FIXTURES FOR RESIDENTIAL UNITS ARE TO BE DARK SKY COMPLIANT WITH A MAXIMUM 5W LED LAMP WATTAGE AND 3000K.
 - INSTALL NOTED POLE LIGHT BASE AS CLOSE AS PRACTICAL TO THE CURB TO MAXIMIZE THE SIDEWALK SPACE BEHIND IT.

LUMINAIRE SCHEDULE						
TYPE	ACCEPTABLE MANUFACTURERS	MODELS	CATALOGUE NUMBERS	DESCRIPTION WATTAGE/VOLTAGE/KELVIN	LOCATION MOUNTING HEIGHT	NOTES
AA	MCGRAW-EDISON	GALEON	GALEON-SA4B-830-U-SLR	AREA LIGHT 171W 120V 3000K	PARKING AREA POLE 18' 5.49m	4" DIAMETER ROUND STRAIGHT 15' STEEL POLE + A 3' BASE. SEE DETAIL ON DRAWING. CONFIRM FINISH WITH OWNER PRIOR TO ORDERING FIXTURES.
BB	MCGRAW-EDISON	GALEON	GWS-SA1B-830-U-SL2	WALL MOUNT 44W 120V 3000K	WALL SURFACE 6m	LED WALL SCOFF. CONFIRM FINISH WITH OWNER PRIOR TO ORDER. 16 LEDS AND TYPE II SPILL LIGHT ELIMINATOR.
BL	MCGRAW-EDISON	GALEON	GWS-SA1B-830-U-SLL	WALL MOUNT 44W 120V 3000K	WALL SURFACE 6m	LED WALL SCOFF. 90° SPILL LIGHT ELIMINATOR LEFT OPTICS. CONFIRM FINISH WITH OWNER PRIOR TO ORDER.
BR	MCGRAW-EDISON	GALEON	GWS-SA1B-830-U-SLR	WALL MOUNT 44W 120V 3000K	WALL SURFACE 6m	LED WALL SCOFF. 90° SPILL LIGHT ELIMINATOR RIGHT OPTICS. CONFIRM FINISH WITH OWNER PRIOR TO ORDER.
CC	HALO COMMERCIAL	PR8	PR810D010-PR8M12WDMW	DOWN LIGHT 10.5W 120V 3000K	OVERHANG RECESSED 11' 3.35m	8" DIA ROUND DOWN LIGHT, WIDE LENS
D	MCGRAW-EDISON	TT	TT-D1-830-U-RW	DOWN LIGHT 28W 120V 3000K	GARAGE FLUSH 3.25m	LED PARKING GARAGE LUMINAIRE, 3000K 80 CRI RECTANGULAR DISTRIBUTION. CONFIRM FINISH WITH OWNER PRIOR TO ORDER.



5		
4		
3		
2		
1	ISSUED FOR SPA	2024.06.17
No	REVISION	DATE

MIGHTON ENGINEERING

300 VICTORIA ST N, 2ND FL. KITCHENER, ON N2H 6R8. PH: (519) 745-3703. FAX: (519) 745-5081. WEB: www.mighton.com

PROJECT TITLE:
 GRAND VALLEY APARTMENTS
 50 EMMA ST, GRAND VALLEY, ONTARIO

DRAWING TITLE: SITE LIGHTING PLAN	
DRAWN BY: M.D.	CUSTOMER PROJECT No.
CHECKED BY: T.A.	MIGHTON PROJECT No. 44364
DATE: JUNE 2024	DRAWING No.
SCALE: 1:200	SL1